



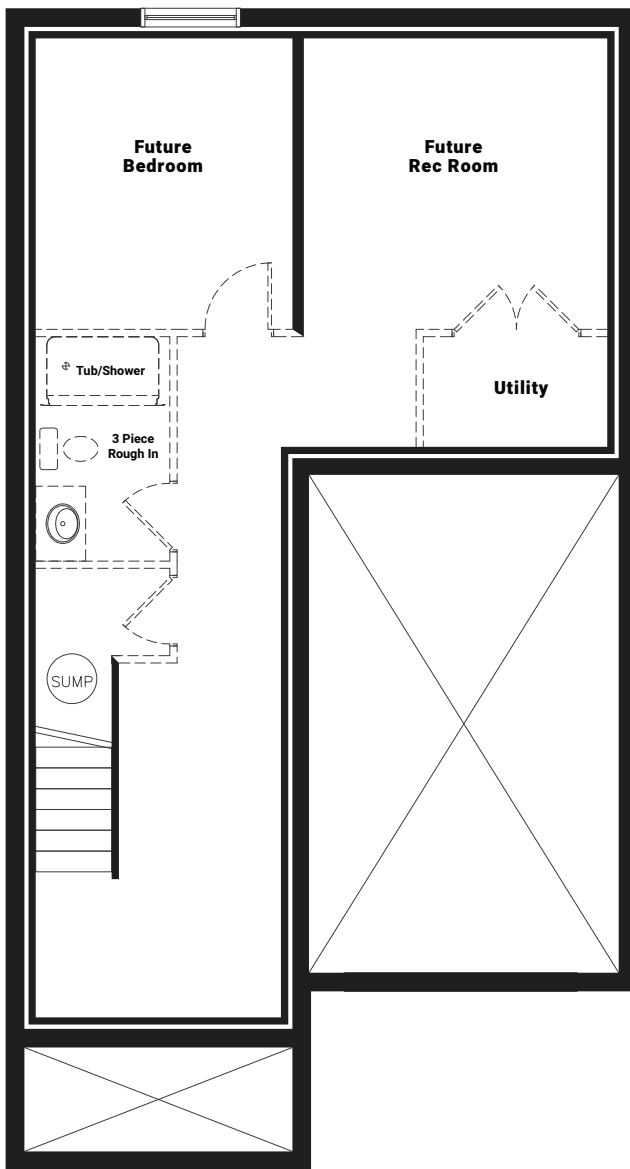
1,620 - 1854 square feet | 2 Storey + Basement Townhomes | 3 Bed | 2.5 Bath



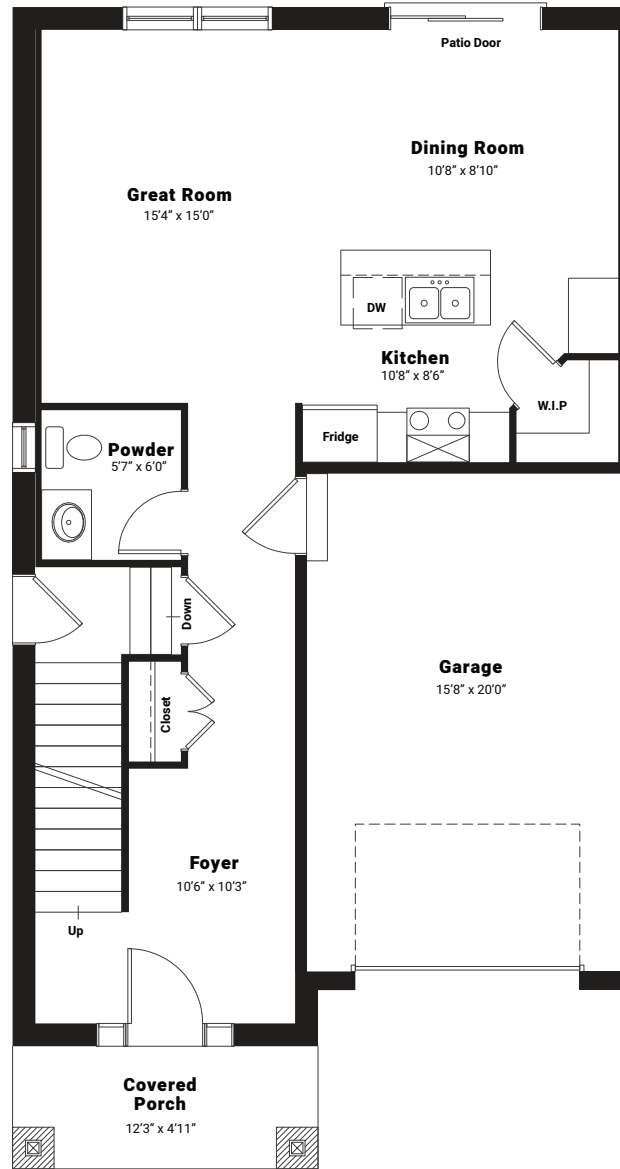
 KASSAR
HOMES

The
Doulyne

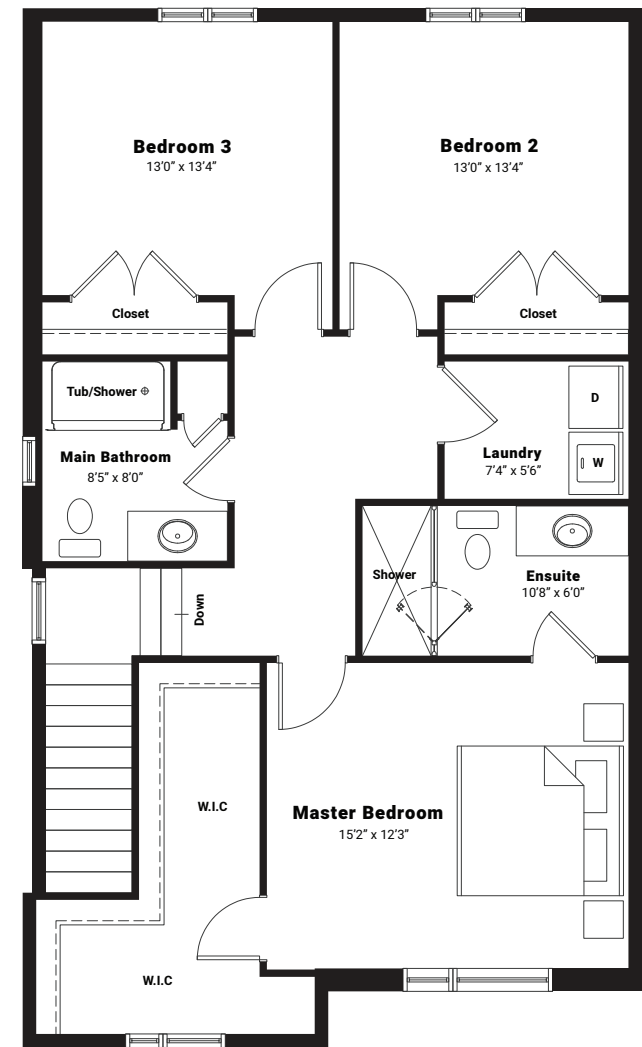
1,620 | 1,684 | 1,854 SF
3 Bed + 2.5 Bath Townhomes



Unfinished Basement



Main Floor
793 sqft



Second Floor
1061 sqft

All house renderings and interior drawings are artist conception. Material specifications and floor plans are subject to change without notice. All floor plans are approximate dimensions, E.&O.E.. NOTE: Actual usable floor space may vary from the stated floor area.

The Doulyne

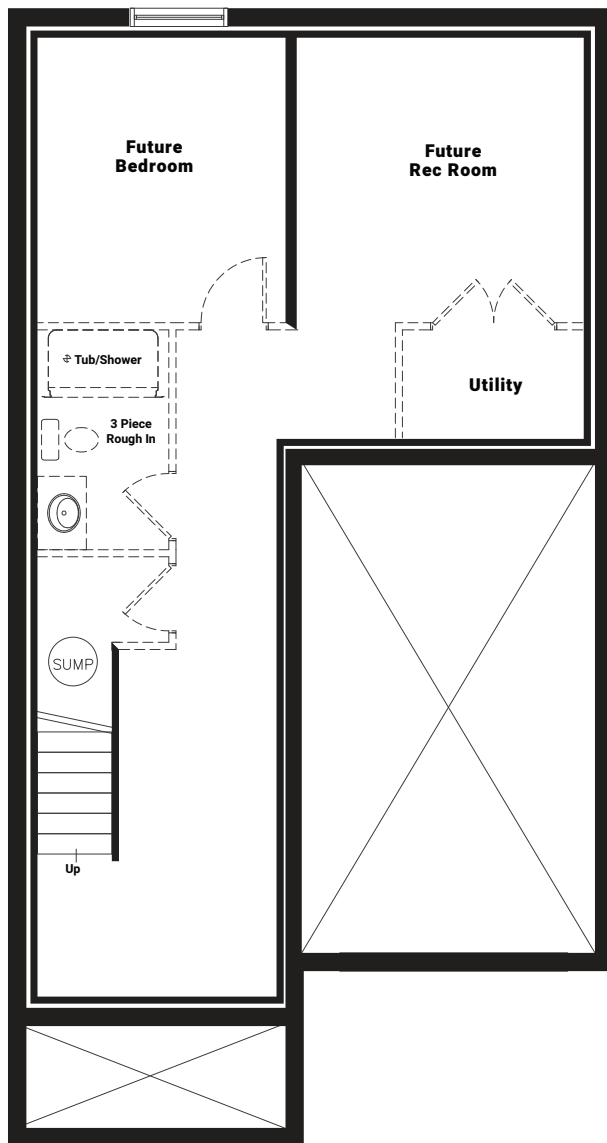
End Unit A | 1854 sq ft

- 3 Bedrooms + 2.5 Bath
- Open Concept Great Room
- Kitchen with Island
- Quartz Countertops

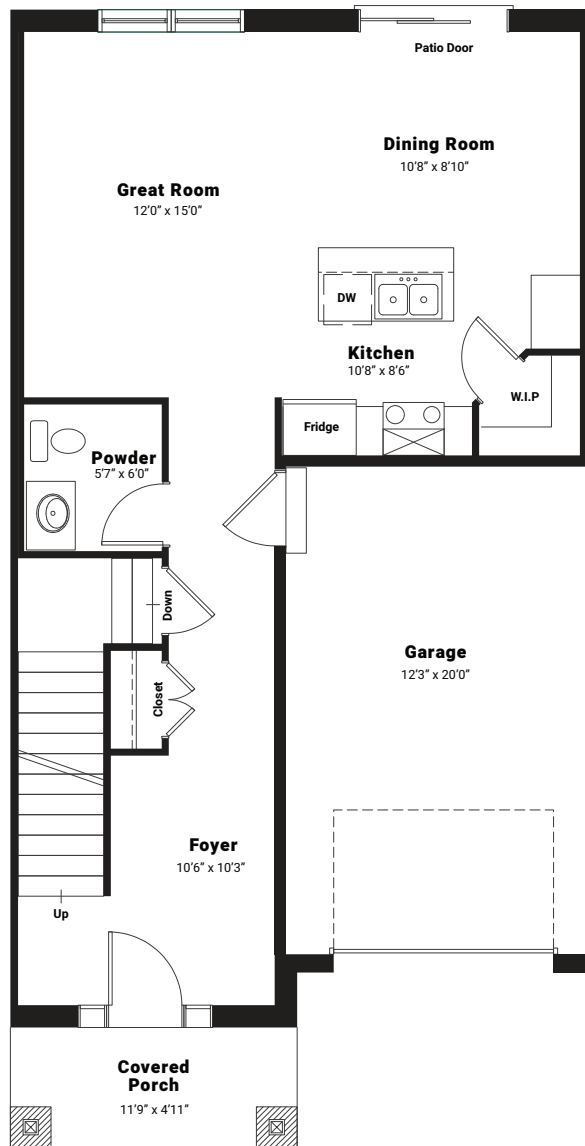
- 25 Pot Lights
- Master Bedroom w/ Ensuite
- Upstairs Laundry
- 9ft Ceiling First Floor / 8ft Second

- Covered Entrance
- 1.5 Car Attached Garage
- Stone and Stucco Elevation
- Prices start at \$599,000

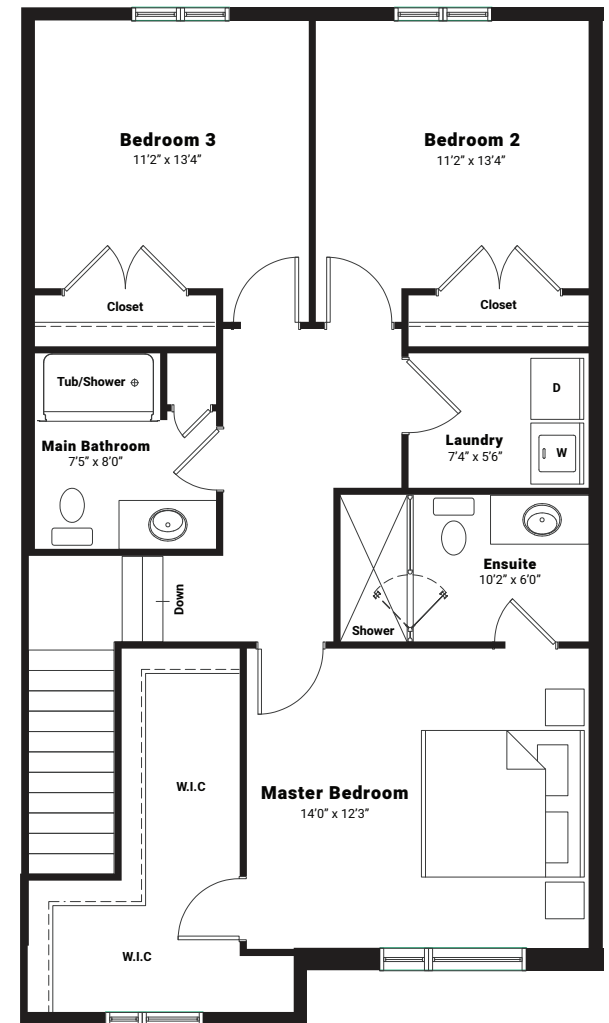
KASSAR HOMES
519.702.4891
kassarhomes.ca



Unfinished Basement



Main Floor
708 sqft



Second Floor
912 sqft

All house renderings and interior drawings are artist conception. Material specifications and floor plans are subject to change without notice. All floor plans are approximate dimensions, E.&O.E.. NOTE: Actual usable floor space may vary from the stated floor area.

The Doulyne

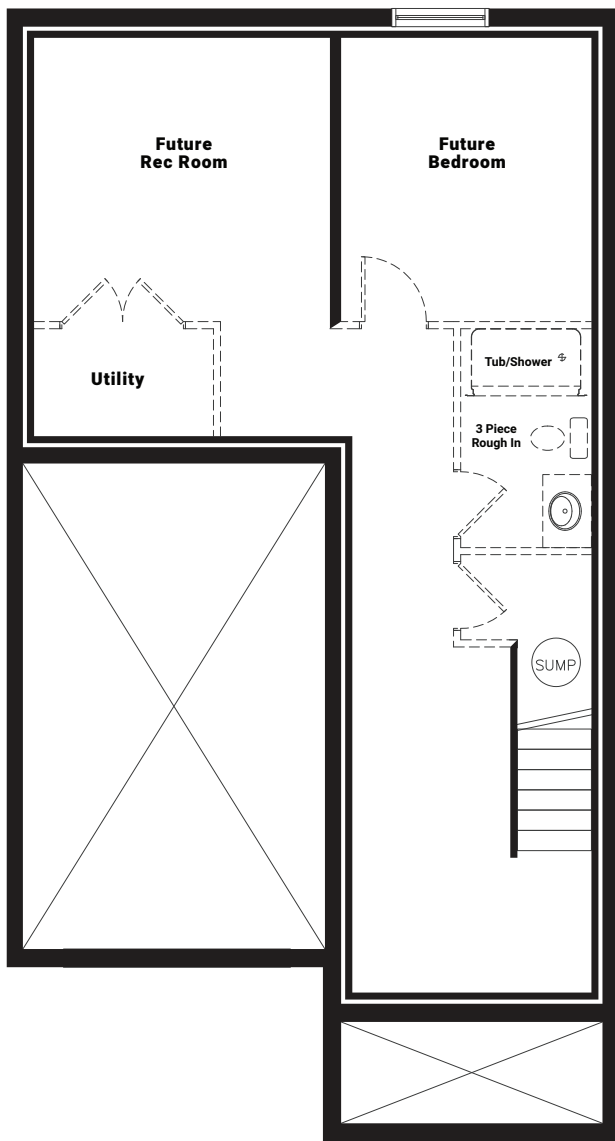
Middle Unit | 1620 sq ft

- 3 Bedrooms + 2.5 Bath
- Open Concept Great Room
- Kitchen with Island
- Quartz Countertops

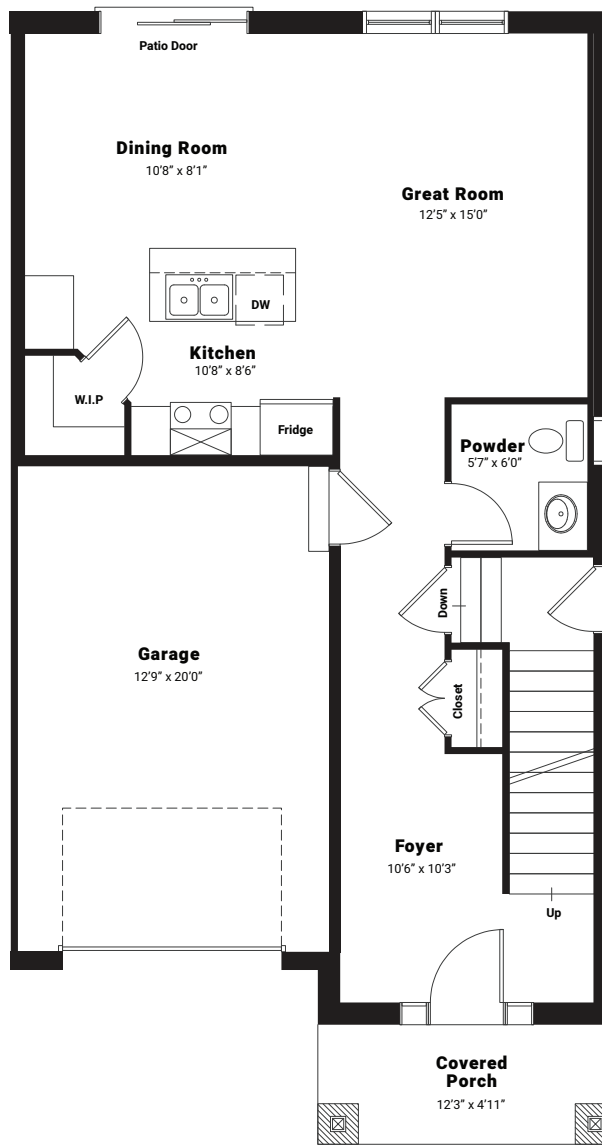
- 25 Pot Lights
- Master Bedroom w/ Ensuite
- Upstairs Laundry
- 9ft Ceiling First Floor / 8ft Second

- Covered Entrance
- Attached Garage
- Stone and Stucco Elevation
- Prices start at \$599,000

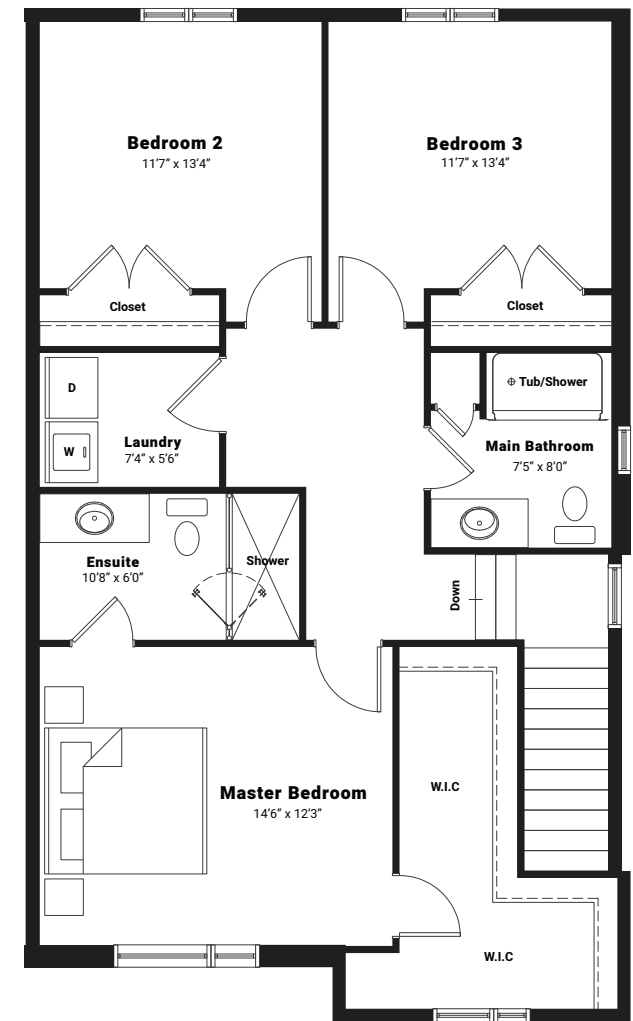
KASSAR HOMES
519.702.4891
kassarhomes.ca



Unfinished Basement



Main Floor
738 sqft



Second Floor
946 sqft

All house renderings and interior drawings are artist conception. Material specifications and floor plans are subject to change without notice. All floor plans are approximate dimensions, E.&O.E.. NOTE: Actual usable floor space may vary from the stated floor area.

The Doulyne

End Unit B | 1684 sq ft

- 3 Bedrooms + 2.5 Bath
- Open Concept Great Room
- Kitchen with Island
- Quartz Countertops

- 25 Pot Lights
- Master Bedroom w/ Ensuite
- Upstairs Laundry
- 9ft Ceiling First Floor / 8ft Second

- Covered Entrance
- Attached Garage
- Stone and Stucco Elevation
- Prices start at \$599,000

KASSAR HOMES
519.702.4891
kassarhomes.ca